



KINGFISHER AND KINGFISHER RT LUXURY LODGES

— 'building your dreams' —



Kingfisher Luxury Lodge

The Kingfisher, credited as creating the luxury lodge market, has been one of the most popular lodges in the UK for many years.

The distinctive exterior has a full glass front fascia, French doors to the lounge and dining areas and feature lighting – perfect for park settings, allowing the outside in!

Inside, vaulted ceilings create a bright and spacious feel and contemporary interior design, alongside a colour scheme of fresh natural tones with highlights of duck egg and royal blues, come together to form the perfect holiday environment.

A clever layout in the open-plan living space incorporates a fully fitted contemporary-styled, ivory gloss kitchen, dining area with Turin light oak extending dining table and lounge with a comfortable sofa and armchairs; everything needed for guests to relax in comfort and style.

The generous master bedroom has a dressing area and en-suite, and the second bedroom, with twin beds, is conveniently positioned next to the stylish shower room.

The Kingfisher is also available with an impressive Roof Terrace – a lodge with a view! With an external spiral staircase, the spacious upper terrace can easily fit two sun-loungers, as well as a table and chairs – simply sit back and enjoy the view!

01842 810 673 | www.omar.co.uk

 **GOLDSHIELD**
An AROS Holdings Company





Some photos may include optional extras. Specifications and layouts may differ from those shown here. For full details, please contact our sales team.

Please note: The Kingfisher shown in the images is a mirror image floor-plan.

Construction

- Built to BS 3632 and protected by a 10-year Gold Shield structural warranty
- Pitched tiled roof - tiles guaranteed for 40 years
- PVCu double glazing (10-year frame warranty + 5-year glazing warranty)
- Full glass front fascia with French doors to the lounge and dining areas
- Clad in Canoxel (available in a range of colours and claddings)
- Feature interior and exterior lighting
- Roof dormer over side entrance

Kitchen

- Contemporary ivory gloss kitchen with soft / self close doors and drawers
- Axiom walnut butchers block worktop
- Integrated fridge, freezer, dishwasher and washer / dryer
- Stainless steel, electric double oven and hob with extractor hood
- Utility room available on selected floor plans

Living space

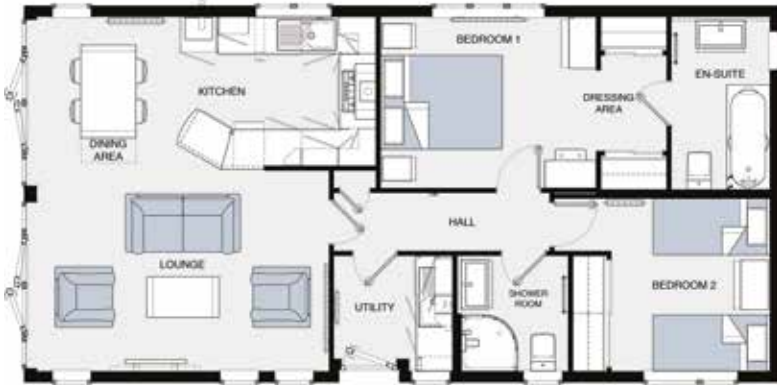
- Contemporary wall-mounted electric fire with pebbles
- Barletta style lounge suite with contrasting scatter cushions
- Bentley Designs, Turin light oak furniture including a coffee table, mirror, dining table and chairs
- Feature pendant light over dining table
- Fully lined curtains with tie backs
- Hessian backed carpet with underlay to the lounge and dining areas and vinyl to the kitchen

Bedrooms and bathrooms

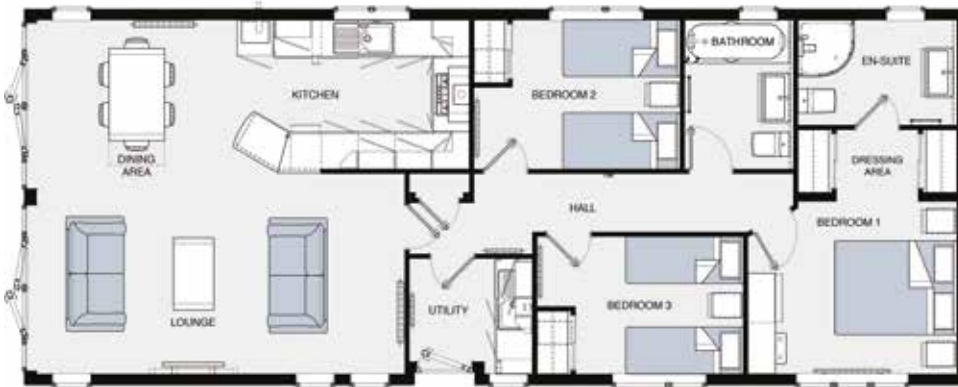
- Double bedrooms with coordinating headboards and bed sets
- Dressing area to master bedroom
- Fitted wardrobes with sliding doors and freestanding bedside cabinets to bedrooms
- Fully lined curtains to the bedrooms and Venetian blinds to the shower room and en-suite
- Wall hung floating vanity units to the shower room and en-suite bathroom
- Quadrant shower cubicle with body jets and two shower heads to the shower room

Kingfisher and Kingfisher RT Luxury Lodges

The Kingfisher is available in a range of standard floor plans, examples of which are shown below. We can modify the floor plans to suit your individual requirements. Please contact our sales team for more details.



40' x 20' (12.192m x 6.012m) Living space with lounge, kitchen and dining areas, utility room, 2 bedrooms (master with en-suite and dressing area) and family shower room



50' x 20' (15.240m x 6.012m) Living space with lounge, kitchen and dining areas, utility room, 3 bedrooms (master with en-suite and dressing area) and family bathroom

Choosing your lodge

Buying a lodge is a big decision, so at Omar we aim to make the process as stress-free as possible ensuring you get exactly what you want.

We have a wide range of floor plans and décor styles so you can choose the perfect look and layout. We can even create a bespoke design to suit your individual requirements – such as catering for additional needs.

To see our lodges first-hand and find the one that's right for you, book an appointment to visit our Show Centre at Brandon, Suffolk. We're just off the A11 within easy reach of Norwich, Cambridge, Thetford and Newmarket, and around 1.5 hours' drive from London.

Our opening hours are Monday to Friday 9.30am–4.30pm and Saturday 10.00am–4.00pm.
Postcode for use with Sat Nav: IP27 0LX

Omar Park & Leisure Homes, Pleszko House, London Road, Brandon, Suffolk IP27 ONE

01842 810 673 | www.omar.co.uk | sales@omar.co.uk

